

BENDERS **DACH** - FEBRUAR 2024

FARBEN UND FORMEN



Benders Deutschland GmbH

Mehr über Benders:
www.benders.se

Erfahren Sie mehr über
unsere Produkte und Leistungen auf:
www.benders.se

MEHR ÜBER BENDERS



30 Jahre Garantie

Wir gewähren 30 Jahre Garantie auf Festigkeit, Wasserundurchlässigkeit und Frostbeständigkeit bei Beachtung der jeweils gültigen Richtlinien des ZVDH sowie Benders Verlegeanleitung.

Prospekte
Verlegeanleitung
Zertifikate
Garantie

...
...

Fachhandel
LOG IN

...für weiterführende
Informationen!

Produktdaten- blätter

...für detaillierte
Technik-Info!

Erfahrung! Vielfalt! Qualität!

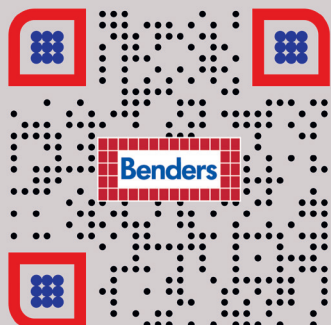
Dachsteinherstellung seit 1960



Ausschreibungs- texte

Laden Sie online
Ausschreibungstexte
in verschiedenen
Formaten herunter
(GAEB/TEXT/PDF)

Benders Homepage



Windsogberechnung



Dachberechnung

Mit unserem Dach
berechnungsprogramm
können Sie einfach aus-
rechnen, wie viele Dach-
steine Sie für Ihr Dach in
etwa benötigen



INHALTSVERZEICHNIS

BENDERS PALEMA S

- 4 BENDERIT
- 4 CANDOR
- 4 BRILLIANT
- 5 FORMTEILE AUS BETON
- 5 DURCHFÜHRUNGEN

BENDERS MECKLENBURGER

- 6 BENDERIT
- 6 CANDOR
- 6 BRILLIANT
- 7 FORMTEILE AUS BETON
- 7 DURCHFÜHRUNGEN

BENDERS FORMTEILE UND ZUBEHÖR

- 8 BENDERS FORMTEILE UND ZUBEHÖR

BENDERS CARISMA

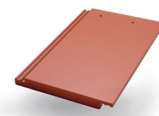
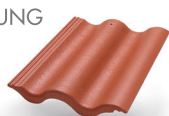
- 10 BENDERIT
- 10 CANDOR
- 10 BRILLIANT
- 10 VERLEGESCHEMA
- 11 FORMTEILE AUS BETON
- 11 DURCHFÜHRUNGEN

BENDERS EINFACH-S

- 12 BENDERIT
- 12 CANDOR
- 12 BRILLIANT
- 13 FORMTEILE AUS BETON
- 13 DURCHFÜHRUNGEN

BENDERS KOMPLETTIERENDES ZUBEHÖR

- 14 DACHSICHERHEIT
- 14 ANSCHLÜSSE/BE- UND ENTLÜFTUNG
- 15 SONSTIGE



	Palema S	Mecklenburger	Einfach-S	Carisma
Dachsteinlänge	420 mm	420 mm	420 mm	420 mm
Dachsteinbreite	330 mm	330 mm	280 mm	280 mm
Lattabstände (empfohlen)	315 - 345 mm	315 - 345 mm	315 - 345 mm	315 - 340 mm
Mindestüberdeckung	75 mm	75 mm	75 mm	80 mm
Deckbreite	300 mm	300 mm	250 mm	250 mm
Regeldachneigung	min. 22°	min. 22°	min. 22°	min. 25°
max. Lattabstand	max. 345 mm	max. 345 mm	max. 345 mm	max. 340 mm
Gewicht/St.	ca. 4,05 kg	ca. 4,3 kg	ca. 3,9 kg	ca. 4,5 kg
Palettierung	120/240 St.	120/240 St.	240 St.	210 St.
Bedarf pro m ²	9,7 - 10,6 St.	9,7 - 10,6 St.	11,6 - 12,7 St.	11,8 - 12,7 St.

BENDERS PALEMA S

BENDERIT



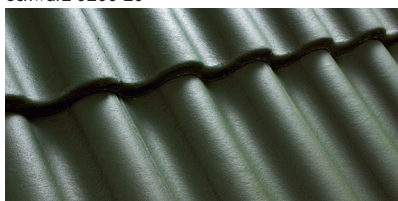
Schwarz 0200 20



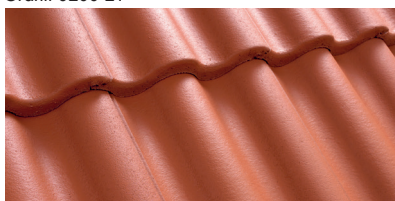
Granit 0200 21



Braun 0200 22



Grün 0200 23



Ziegelrot 0200 24



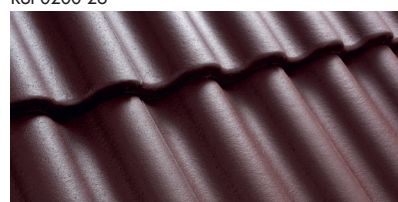
Rot 0200 26



Mittelgrau 0200 28



Flash (Ziegelrot/Braun) 0200 29



Weinrot 0200 31



Dunkelgrau 0200 48

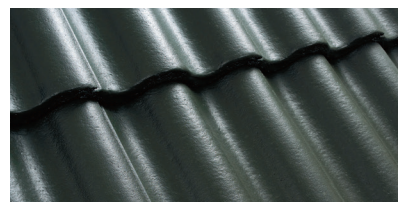
CANDOR



Schwarz 0200 80



Kastanienbraun 0200 82



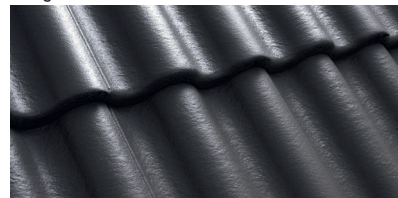
Olivgrün 0200 83



Ziegelrot 0200 84



Terracottarot 0200 86



Dunkelgrau 0200 98

BRILLIANT



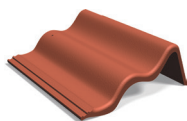
Schiefer 0200 51



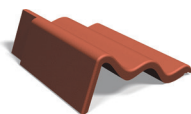
Kupfer 0200 55 *

* Kupfer: Keine Lagerware - Lieferzeit erfragen.
Keine Giebelsteine.

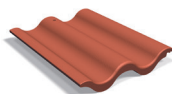
FORMTEILE AUS BETON



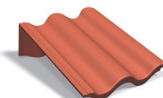
Giebelstein rechts



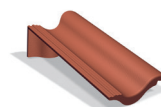
Giebelstein links



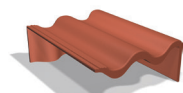
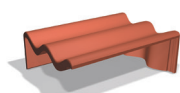
Doppelkremper



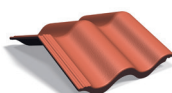
Pultstein 90°



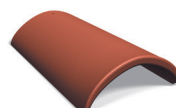
Pulthalfstein 90°

Pult-Giebelstein rechts
90°

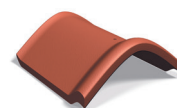
Pult-Giebelstein links 90°



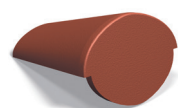
Mansardstein/Knickstein



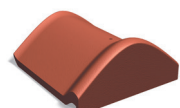
Firststein



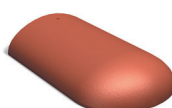
Firststein mit Wulst



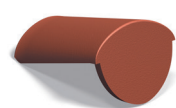
Firstanfangstein



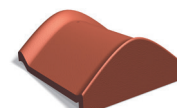
Firstanfangstein mit Wulst



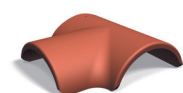
Gratanfangstein



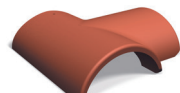
Firstendstein



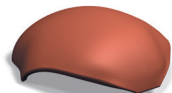
Firstendstein mit Wulst



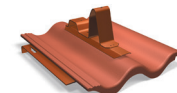
Firstanfang T-Stein



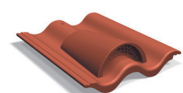
Firstend T-Stein



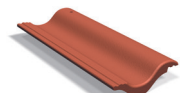
Walmglocke

Firststein, Kreuzform-
Zeltdach

Euro Standstein

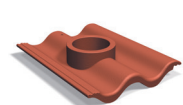


Lüfterstein Beton



Halbstein mit Falz

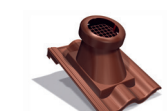
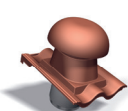
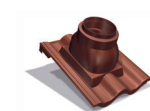
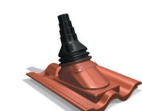
DURCHFÜHRUNGEN



Durchgangspfanne Beton



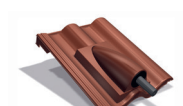
Dunstrohr- und Entwässerungslüfter Beton

Dunstrohrlüfter
HV 100/110 isoEntwässerungslüfter
HV 100/110 isoDunstrohrlüfter
HV 125 isoEntwässerungslüfter
HV 125 isoDunstrohrlüfter
HV 160 isoGasthermendurchgang
GS

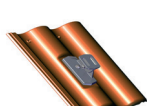
Antennendurchgangspfanne



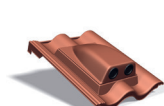
Antennenaufsatz Beton



Solardurchgangspfanne TT



Solarträgerhalter



Solardurchgangspfanne PV

Flexibles Anschlussrohr
NW 100Flexibles Anschlussrohr
NW 125

BENDERS MECKLENBURGER

BENDERIT



Schwarz M200 20



Granit M200 21



Braun M200 22



Ziegelrot M200 24



Rot M200 26

CANDOR



Schwarz M200 80



Terracottarot M200 86

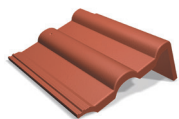
BRILLIANT



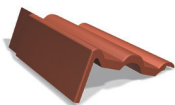
Schiefer 0200 51



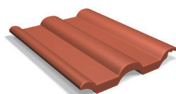
FORMTEILE AUS BETON



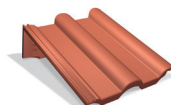
Giebelstein rechts



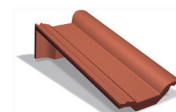
Giebelstein links



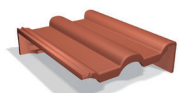
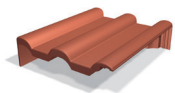
Doppelkremper



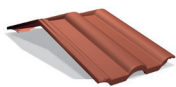
Pultstein 90°



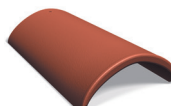
Pulthalfstein 90°

Pult-Giebelstein rechts
90°

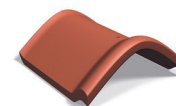
Pult-Giebelstein links 90°



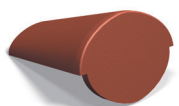
Mansardstein/Knickstein



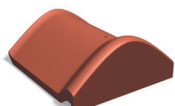
Firststein



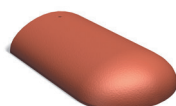
Firststein mit Wulst



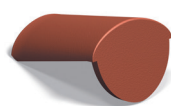
Firstanfangstein



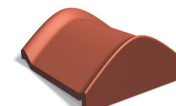
Firstanfangstein mit Wulst



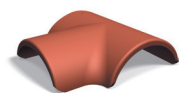
Gratanfangstein



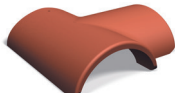
Firstendstein



Firstendstein mit Wulst



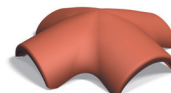
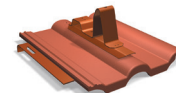
Firstanfang T-Stein



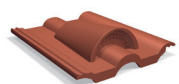
Firstend T-Stein



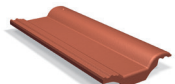
Walmglocke

Firststein, Kreuzform-
Zeltdach

Euro Standstein

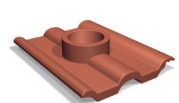


Lüfterstein Beton



Halbstein mit Falz

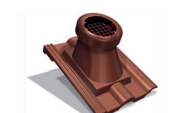
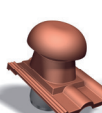
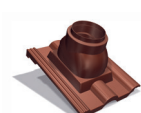
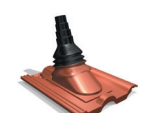
DURCHFÜHRUNGEN



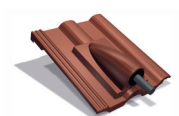
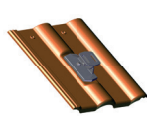
Durchgangspfanne Beton



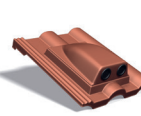
Dunstrohr- und Entwässerungslüfter Beton

Dunstrohrlüfter HV
100/110 isoEntwässerungslüfter
HV 100/110 isoDunstrohrlüfter HV 125
isoEntwässerungslüfter
HV 125 isoDunstrohrlüfter
HV 160 isoGasthermendurchgang
GSAntennendurchgangs-
pfanne

Antennenaufsatz Beton

Solardurchgangs-
pfanne TT

Solarträgerhalter

Solardurchgangs-
pfanne PVFlexibles Anschlussrohr
NW 100Flexibles Anschlussrohr
NW 125

FORMTEILE UND ZUBEHÖR



BENDERS ORIGINALZUBEHÖR AUS BETON

Es ist uns daran gelegen, dass Sie Originalzubehör in unserem Sortiment finden, welches zu unserem Flächensteinprogramm passt und dieses in bester Weise ergänzt. Wenn Sie unser Originalzubehör verwenden, stellen Sie Passgenauigkeit und Farbübereinstimmung sicher.



BENDERS CARISMA

BENDERIT



Granit C000 21

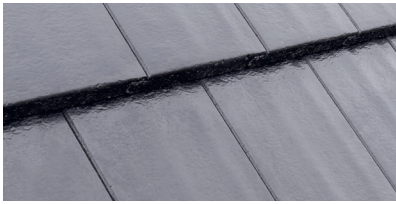


Ziegelrot C000 24



Mittelgrau C000 28

CANDOR



Schwarz C000 80

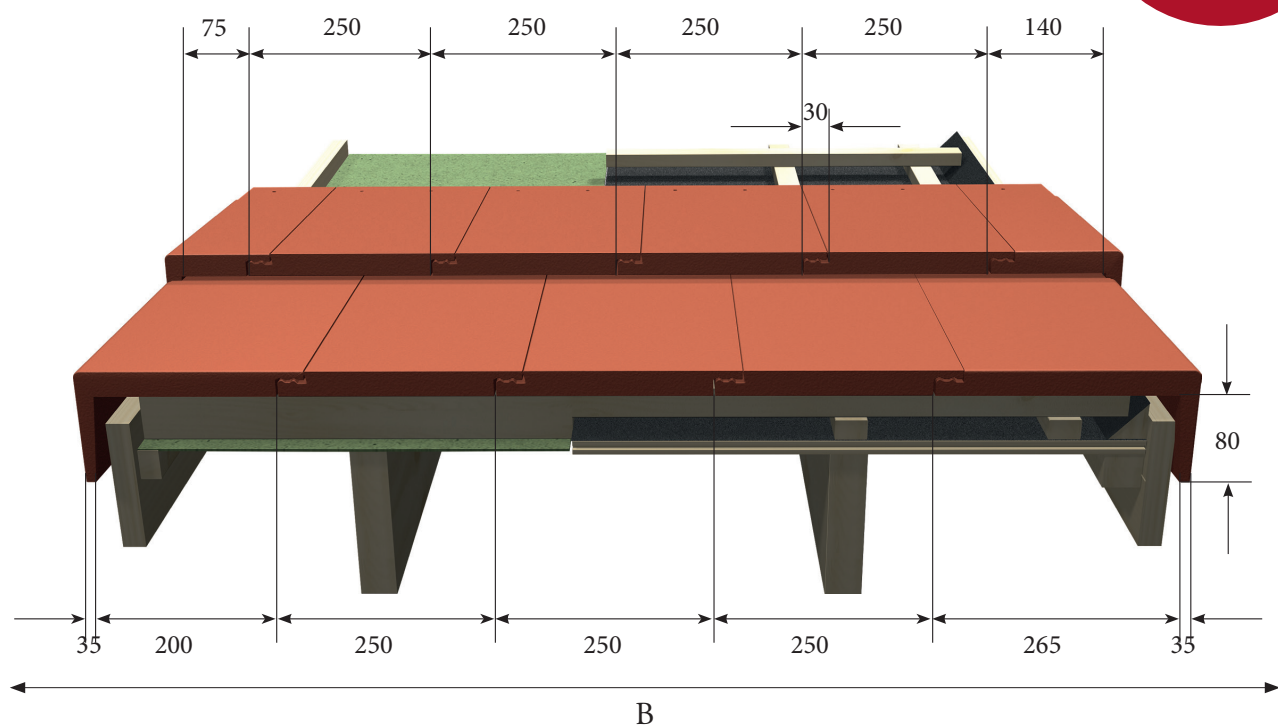
BRILLIANT



Schiefer C000 51

VERLEGESCHEMA

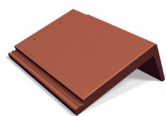
Schnittdarstellung der Deckbreiten mit Giebel- und Giebelhalbsteinen.



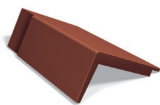
CARISMA
VERLEGUNG IM
HALBVERBAND

B = Lichter Abstand zwischen der Innenseite des rechten bis zur Innenseite des linken Ortganglappen

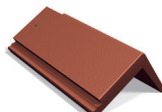
FORMTEILE AUS BETON



Giebelstein rechts



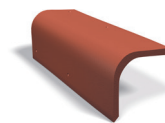
Giebelstein links



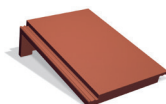
Giebelhalbstein rechts



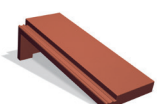
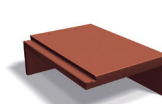
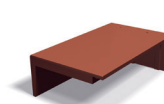
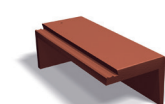
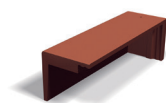
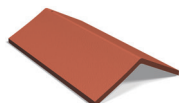
Giebelhalbstein links



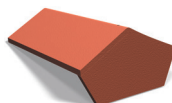
Universal-Giebel



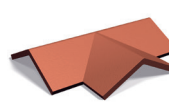
Pultstein 90°

Pultschlussstein
rechts/links 90°Pult-Giebelstein
rechts 90°Pult-Giebelstein
links 90°Pult-Giebelhalbstein
rechts 90°Pult-Giebelhalbstein
links 90°

Firststein



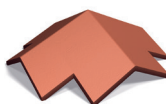
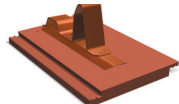
Firstanfangstein



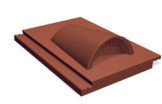
First T-Stein



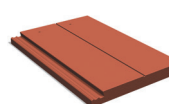
Walmglocke 25°

Firststein, Kreuzform-
Zeltdach

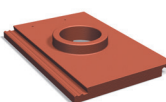
Euro Standstein



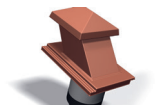
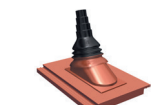
Lüfterstein Beton

Schluss - Abschlussstein
rechts/links

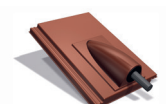
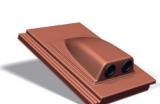
DURCHFÜHRUNGEN



Durchgangspanne Beton

Dunstrohr- und Entwässer-
ungslüfter BetonDunstrohrlüfter HV
100/110 isoEntwässerungslüfter
HV 100/110 isoDunstrohrlüfter HV 125
isoEntwässerungslüfter
HV 125 isoDunstrohrlüfter
HV 160 isoGasthermendurchgang
GSAntennendurchgangs-
panne

Antennenaufsatz Beton

Solardurchgangs-
panne TTSolardurchgangs-
panne PVFlexibles Anschlussrohr
NW 100Flexibles Anschlussrohr
NW 125

BENDERS EINFACH-S

BENDERIT



Ziegelrot 0100 24



Flash (Ziegelrot/Braun) 0100 29

CANDOR



Terracottarot 0100 86

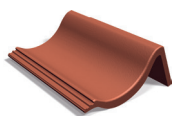
BRILLIANT



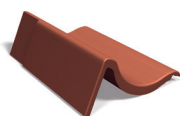
Schiefer 0100 51



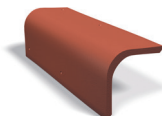
FORMTEILE AUS BETON



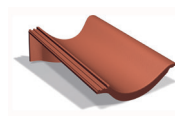
Giebelstein rechts



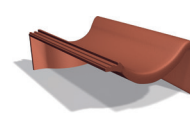
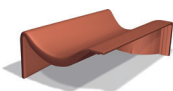
Giebelstein links



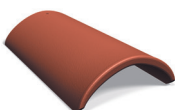
Universal-Giebel



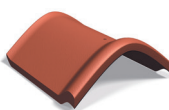
Pultstein 90°

Pult-Giebelstein
rechts 90°

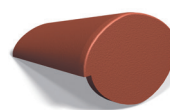
Pult-Giebelstein links 90°



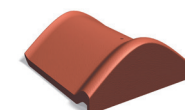
Firststein



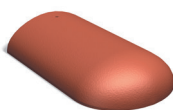
Firststein mit Wulst



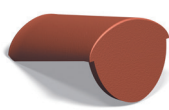
Firstanfangstein



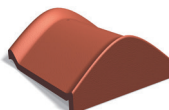
Firstanfangstein mit Wulst



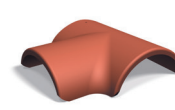
Gratanfangstein



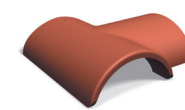
Firstenstein



Firstenstein mit Wulst



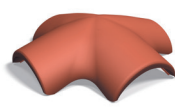
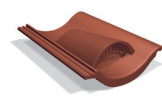
Firstanfang T-Stein



Firstend T-Stein

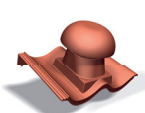
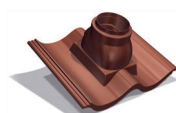


Walmglocke

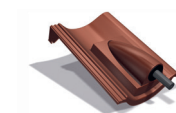
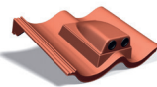
Firststein, Kreuzform-
Zeltdach

Lüfterstein Beton

DURCHFÜHRUNGEN

Dunstrohlüfter HV
100/110 isoDunstrohlüfter
HV 160 isoGasthermendurchgang
GS

Antennenauflauf Metall

Solardurchgangs-
panne TTSolardurchgangs-
panne PVFlexibles Anschlussrohr
NW 100Flexibles Anschlussrohr
NW 125

KOMPLETTIERENDES ZUBEHÖR

DACHSICHERHEIT



Laufrostpaket 82 cm



Laufrostpaket 49 cm



Steigtritt mit integriertem Bügel



Schneefanggitter 1 m mit Muffe



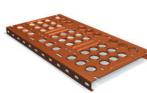
Schneefanggitterstütze



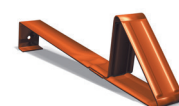
Laufroste 825 x 260 mm



Rundholzhalter



Laufroste 495 x 260 mm

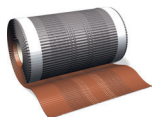


Schneestopper

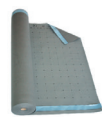


Universal-Solarhalter, höhenverstellbar

ANSCHLÜSSE/BE- UND ENTLÜFTUNG



First- und Gratrolle 300/340/370 mm



UDB Bentharm 150 SK



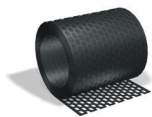
Bentharm Nageldichtband zweiseitig klebend



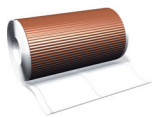
Bentharm Multi Tape 60 mm



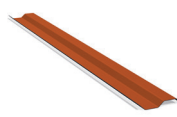
Bentharm Dichtmasse 310 ml



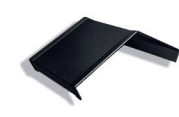
Traufenlüftungsgitter Rolle



Wand-Kamin flexibler Anschluss



WAKA-Abschlussleiste 1 m



Fugenblech First Carisma



Kehlblech



Haften für Kehlbleche



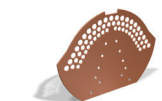
Kehldichtungstreifen



Trauflüftungselement mit Kamm



Trauflüftungselement ohne Kamm Carisma



Firstendscheiben PVC

WINDSOGSICHERUNG



Schrauben für Formsteine



Ausspitzklammer Edelstahl



Traufklammer Universal



Firstlattenhalter



Firstklammer langes Modell



Firstklammer 470/168



Sturmklammer 456



Sturmklammer Nordmark 2



Sturmklammer Einfach-S

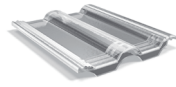


Sturmklammer Carisma

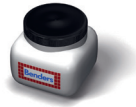
SONSTIGE



Lichtpfanne Palema S



Lichtpfanne
Mecklenburger



Oberflächenfarbe



Takrent - Dachreiniger
1 Liter



Firstschmuck Eule



Firstschmuck
Schlafwandler



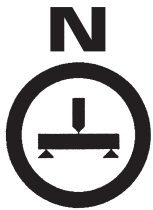
Firstschmuck Hahn



Firstschmuck Katze



Firstschmuck Elch



Alle Dachsteine von Benders erfüllen die DIN EN 490/491 sowie die DIN-plus.
Nähere Informationen entnehmen Sie bitte unserer Verlegeanleitung.



BERATUNG UND AUFTRAGSANNAHME:

Tel.: +49 (0)38454 550

E-Mail: info.de@benders.se

www.benders.se





BENDERS Deutschland GmbH

Gewerbestraße 10
18299 Laage

Tel: + 49 (0) 38454-550

E-Mail: info.de@benders.se

**Weitere Informationen über
Produktionsstätten unter**

www.benders.se



BENDERS / DE / EXAKTA / 2024 - 03 / 2T

Händler: